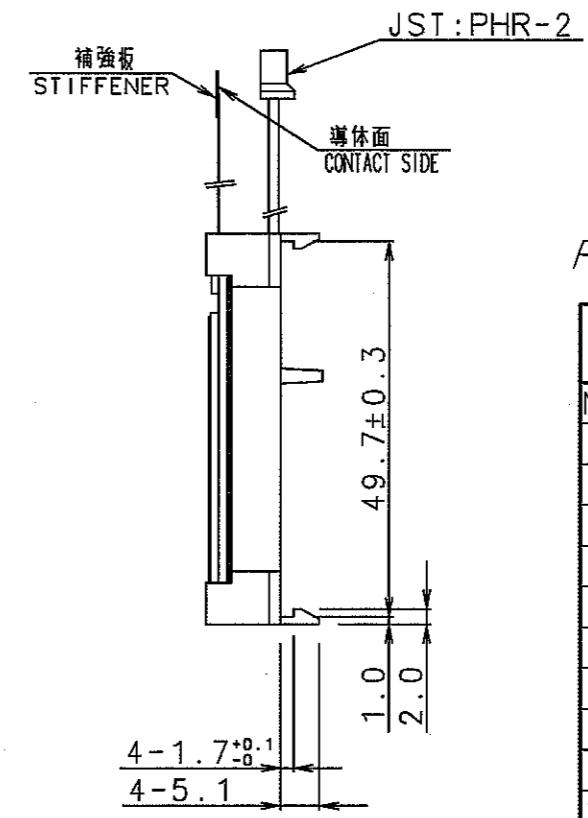
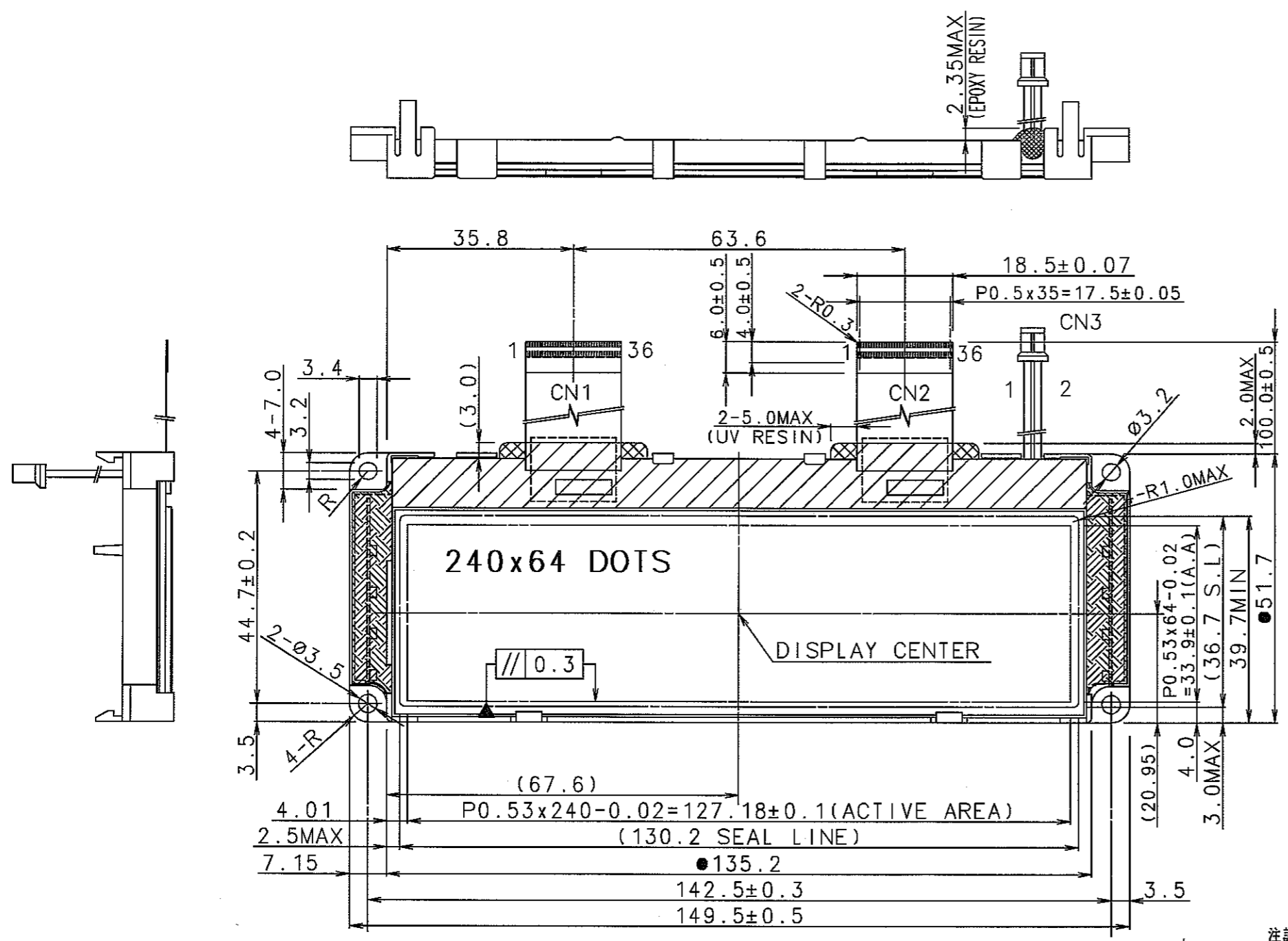


ISSUE	REVISIONS	DRAWN	APPROVED	DATE
△				



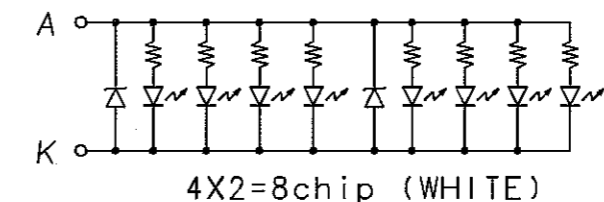
PIN ASSIGNMENT

CN1-MASTER(IC1) CN2-SLAVE (IC2)			
No.	Symbol	No.	Symbol
1	NC	21	VOUT
2	FR	22	CAP3-
3	CL	23	CAP1+
4	DOF	24	CAP1-
5	CS1	25	CAP2-
6	CS2	26	CAP2+
7	RES	27	V1
8	A0	28	V2
9	WR	29	V3
10	RD	30	V4
11	D0	31	V5
12	D1	32	VR
13	D2	33	C86
14	D3	34	P/S
15	D4	35	IRS(CN1) NC(CN2)
16	D5		
17	D6	36	NC
18	D7		
19	VDD		
20	VSS		

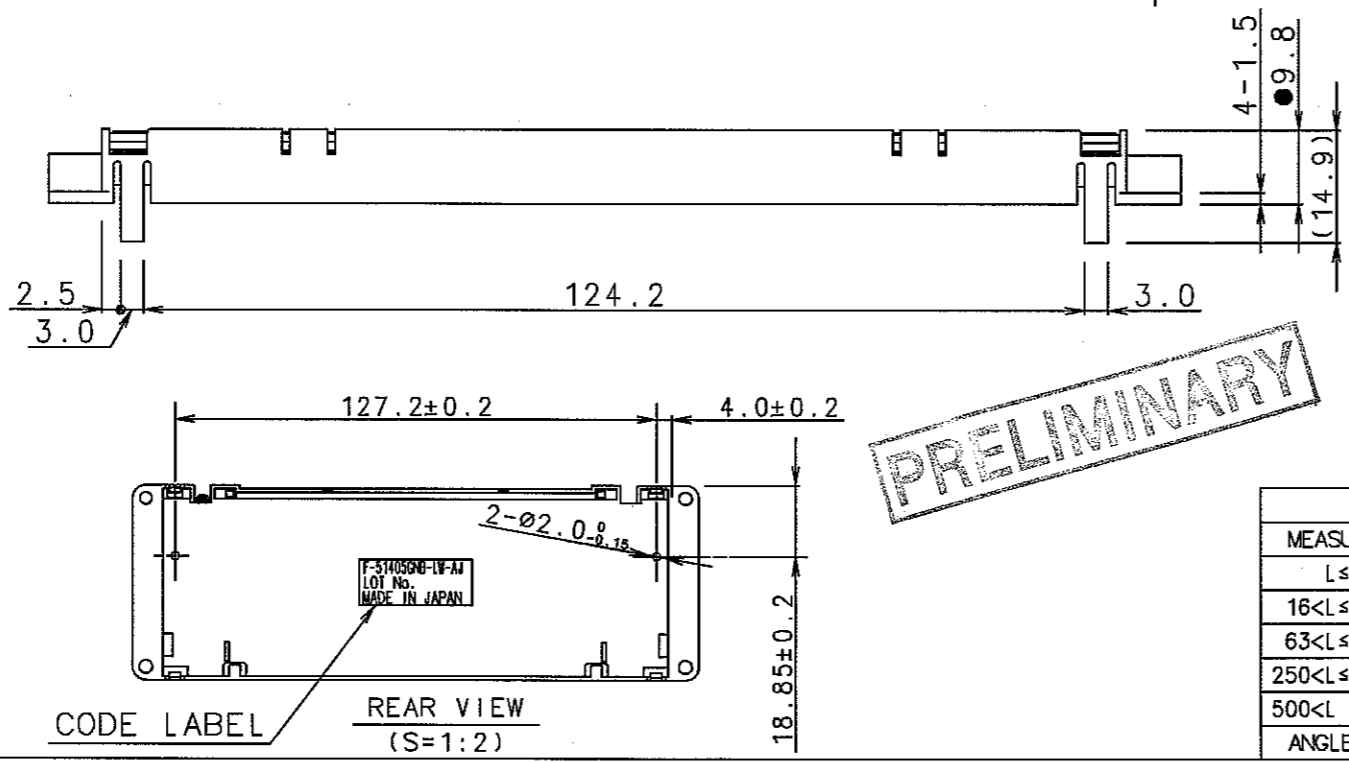
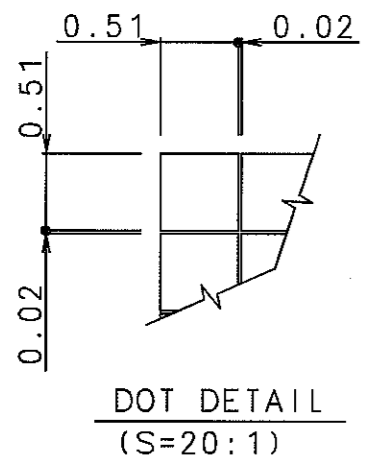
CN3	
No.	Symbol
1	ANODE
2	CATHODE

注記1. ●印のついで寸法は特性管理寸法を示す。
2. LCD端子のハッチング部はシリコン塗布最大範囲を示す。

NOTE1. ● MARK SETTING DIMENSIONS:
:SPECIAL CHARACTERISTICS.
2.HATCHED AREA ON LCD TERMINAL
LEDGE SHOWS MAXIMUM AREA OF
SILICON RESIN.



PRELIMINARY



TOLERANCE			THIRD ANGLE PROJECTION	DATE FEB.21'03	OPTREX CORPORATION
MEASURE	A	B			
L≤16	±0.1	±0.3	±1	UNIT	APPROVED
16<L≤63	±0.2	±0.5	±1.5	mm	CHECKED
63<L≤250	±0.3	±0.8	±2	SCALE	1:1
250<L≤500	±0.5	±1.2	±3		
500<L	±0.8	±2	±4		
ANGLE	±1°	±5°	±10°	DRAWN M.Nakada	DWG NO UE-311744-00